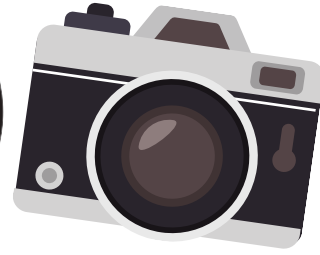


SPECIAL SUMMER EDITION



PICTURE THIS WESLACO A PHOTO SCAVENGER HUNT OF WONDERFUL WESLACO

Complete the activity sheet below and return it to the Chamber & Visitors Center by June 28th for a chance to win a prize!

WORD SEARCH

- ESTERO LLANO GRANDE
- HARLON BLOCK
- ONION FEST
- WESLACO
- FRONTERA AUDUBON
- SKAGGS HOUSE
- PANTHERS
- MUSEUM
- OLD FIRE STATION
- WATER TOWER
- WILDCATS
- BIRDING
- VALLEY NATURE
- GIBSON PARK
- ALFRESCO
- TEXSUN



DIRECTIONS

Solve the riddle and take a picture with the location it gives you then text them to (956)968-2102*. Be creative and most of all have FUN!! (Use the back as a guide for the answers)

FUN FACT

The Altamira Oriole is the Official City Bird!

1

EXPLORE THE RICH HISTORY
DOWN THIS STREET WHILE
YOU SHOP, EAT AND
EXPLORE!

A: _____

2

WHETHER ITS DRAMA,
COMEDY OR ROMANCE COME
ON IN AND GIVE IT A
CHANCE...

A: _____

3

THERE'S CULTURE AND
KNOWLEDGE
PRIMED FOR INSTRUCTION.
WHERE IS THIS?

A: _____

4

SHH...EMILY BRONTE, LEWIS
CARROL, C.S. LEWIS, AND
SHAKESPEARE ARE JUST A
FEW OF THE GREATS THAT
SLEEP HERE...

A: _____

5

YOU COULD STAY THE NIGHT,
OR YOU COULD HAVE A BALL
WITH ALL THAT WAS
HAPPENING IN THESE HALLS

A: _____

6

WHERE DECISIONS WERE
MADE AND FIRES WERE
FOUGHT, THIS PLACE HAS
SERVED BOTH SAFETY AND
THOUGHT. WHERE AM I?

A: _____



Weslaco Visitors Center



Weslaco Area Chamber of Commerce &
Visitors Center | (956)968-2102 |
chamber@weslaco.com |
275 S. Kansas Ave Weslaco, TX

NAME: _____

CITY: _____

FUN FACT

The Zebra Longwing is the Official City Butterfly



HISTORIC LANDMARKS IN THE MID-VALLEY



HISTORIC CITY HALL

Constructed in 1928 and designed by Weslaco Architect R. Newell Waters this served as the Original City Hall & Fire Station for Weslaco.



SKAGGS HOUSE

Designed by Weslaco architect R. Newell Waters this historic home is housed on the Frontera Audubon nature preserve.



WESLACO WATER TOWER

Built in 1941 the Historic Water Tower know as "El Tinaco" now houses the ITheatre of Weslaco.



CAMP LLANO GRANDE

Camp Llano Grande housed National Guard units from Indiana, Nebraska, Minnesota and North Dakota who helped stop Mexican bandit raids during 1916.



VILLA DE CORTEZ

Built in 1928 The Villa De Cortez was one of the areas finest hotels, it was and remains a social center for Weslaco housing restaurants, businesses and event spaces.



MAYOR JOE V. SÁNCHEZ PUBLIC LIBRARY

Established in 1948 the Weslaco Public Library has grown into its two story Spanish style building equipped with a theatre and large collection of books.



TEXAS A&M AGRILIFE EXTENSION

Formerly a military camp in 1916 the Texas A&M Agrilife Research Extension is known for being the home of the 1015 Onion.
(State Vegetable of Texas)



HISTORIC DOWNTOWN WESLACO

Downtown Weslaco houses many of Weslaco's locally owned businesses & restaurants in a variety of original buildings from the city's founding in 1919.



WESLACO CEMETERY

This Historical Cemetery has been open since 1921 and was founded soon after the City of Weslaco was founded.



WESLACO MUSEUM

Formed in 1971 and located in Downtown Weslaco the Weslaco Museum houses artifacts with a goal of preserving the history and culture of the area.



GIBSON PARK

Housed on land donated by Henry Hodge & J.J. Gibson this park started as a Trailer Camp in the 1940s later developing into a City Park. Gibson Park is now home to the Valley Nature Center.



FUN FACT

The State Vegetable of Texas, the 1015 Sweet Onion, was created in Weslaco



FOR MORE INFORMATION CONTACT
THE WESLACO VISITORS CENTER
AT 956-968-2102 OR EMAIL
CHAMBER@WESLACO.COM